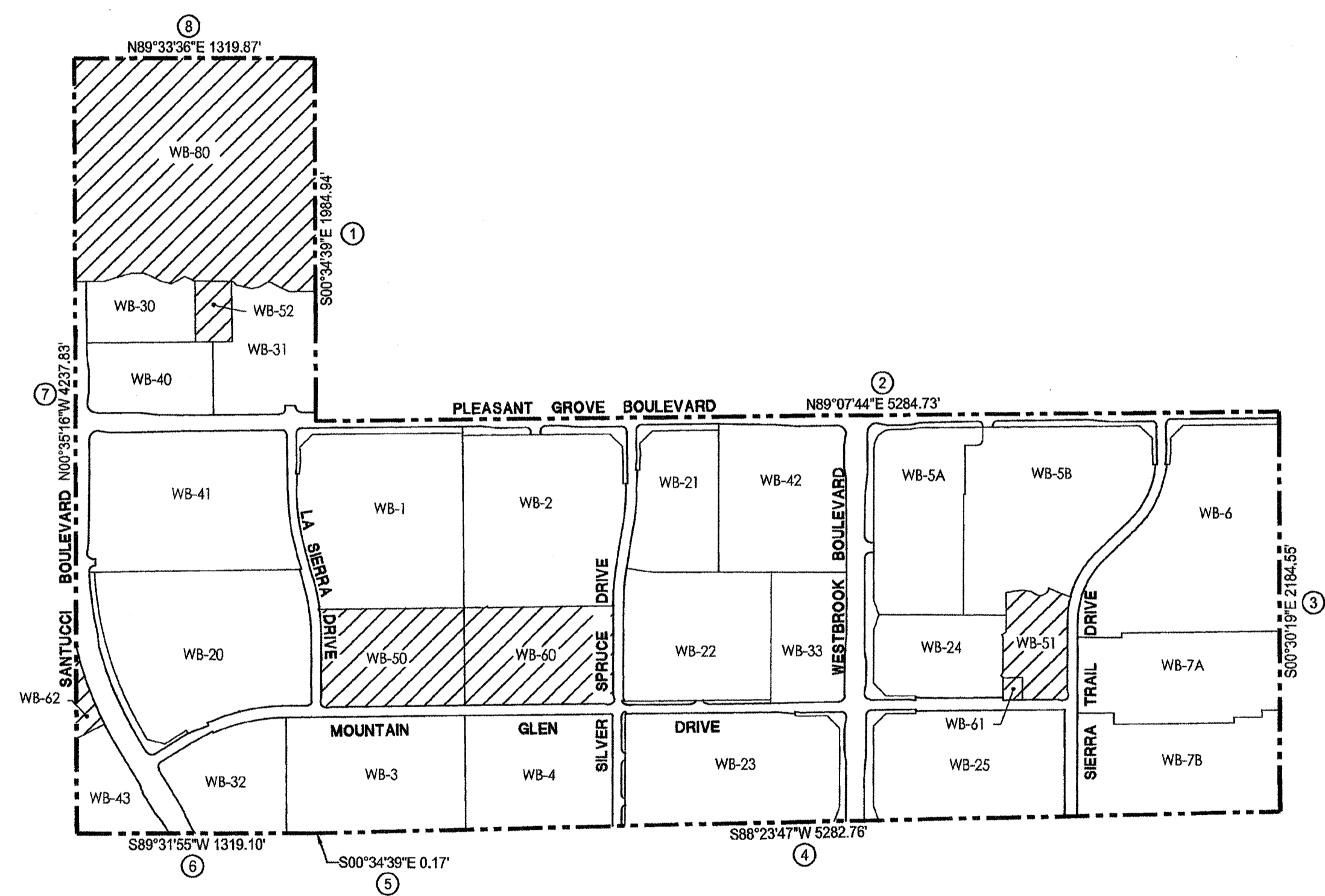
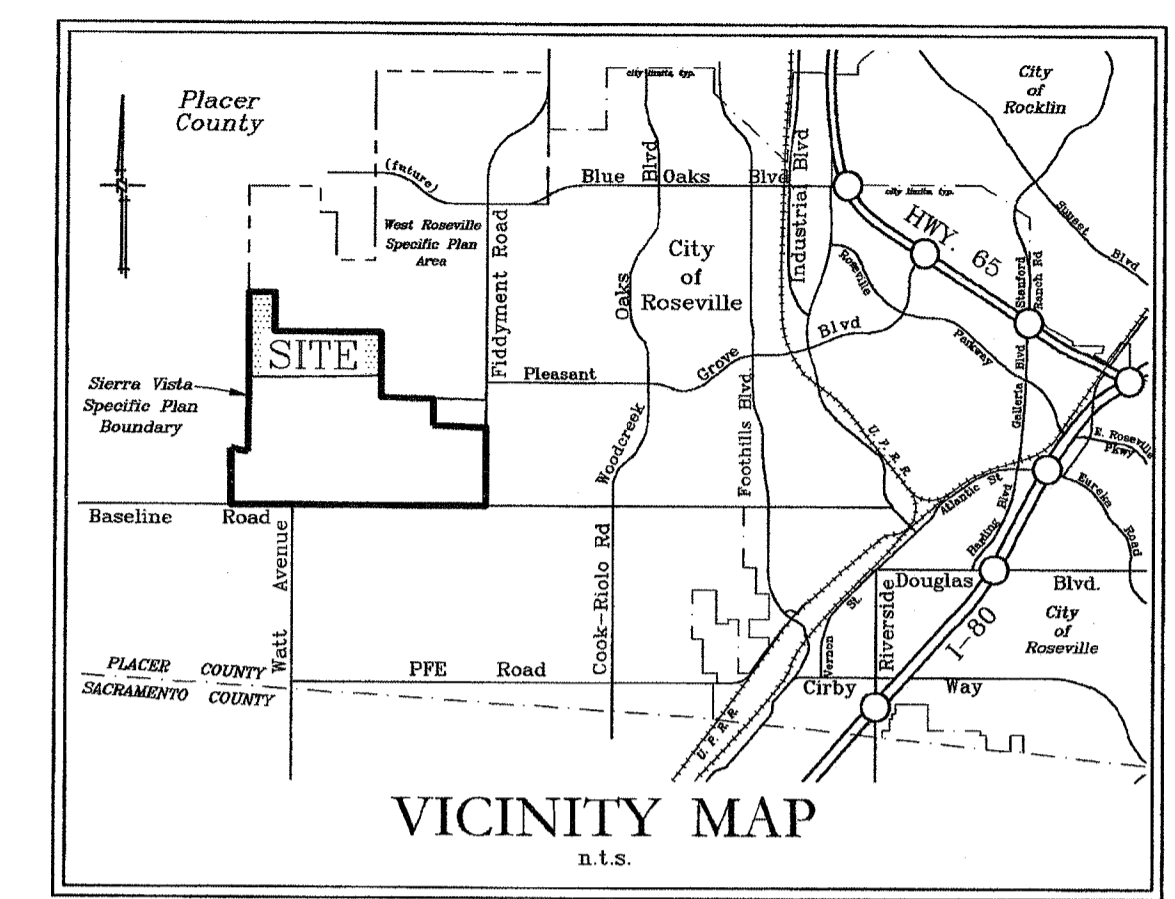
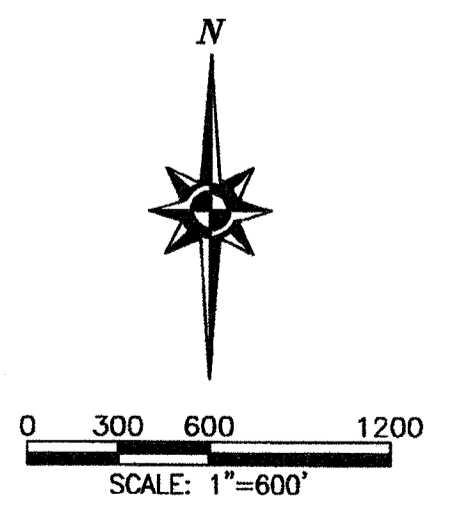


**BOUNDARY MAP  
CITY OF ROSEVILLE  
WESTBROOK COMMUNITY  
FACILITIES DISTRICT NO. 2  
(SERVICES)**

CITY OF ROSEVILLE • PLACER COUNTY • CALIFORNIA  
BEING PORTIONS OF SECTIONS 26 & 27, T.11 N., R.5 E., M.D.M.



**LEGEND**  
 - - - - - DISTRICT BOUNDARY  
 ▨ ANTICIPATED TAX-EXEMPT PARCELS



**CITY CLERK'S MAP FILING STATEMENT**

FILED IN THE OFFICE OF THE CITY CLERK OF THE CITY OF ROSEVILLE THIS 6 DAY OF Nov. 2014.

*Sonia Orozco*  
 SONIA OROZCO, CITY CLERK  
 CITY OF ROSEVILLE  
 PLACER COUNTY, CALIFORNIA

**CITY CLERK'S MAP STATEMENT**

I HEREBY CERTIFY THAT THE WITHIN MAP SHOWING THE PROPOSED BOUNDARIES OF WESTBROOK COMMUNITY FACILITIES DISTRICT NO. 2, CITY OF ROSEVILLE, COUNTY OF PLACER, STATE OF CALIFORNIA, WAS APPROVED BY THE CITY COUNCIL OF THE CITY OF ROSEVILLE, AT A REGULAR MEETING THEREOF, HELD ON THE 5 DAY OF November 2014 BY ITS RESOLUTION NO. 14-976.

*Sonia Orozco*  
 SONIA OROZCO, CITY CLERK  
 CITY OF ROSEVILLE  
 PLACER COUNTY, CALIFORNIA

**RECORDER'S STATEMENT**

FILED THIS 10 DAY OF November, 2014, AT THE HOUR OF 9:49 O'CLOCK A.M. IN BOOK 3 OF MAPS OF ASSESSMENT AND COMMUNITY FACILITIES DISTRICTS, AT PAGE 71 IN THE OFFICE OF THE COUNTY RECORDER IN THE COUNTY OF PLACER, STATE OF CALIFORNIA.

DOCUMENT NO. 2014 - 0079649

FEE: \$ 8.00

BY: Jim McCauley  
 JIM MCCAULEY  
 COUNTY RECORDER  
 COUNTY OF PLACER  
 by: J. McCormick, Deputy

**Mackay & Somp**  
 ENGINEERS PLANNERS SURVEYORS  
 1522 Eureka Road, Suite 100, Roseville, CA 95661 (916) 773-1189

OCTOBER 2014  
 SHEET 1 OF 1 18437-EXT